



Software solutions for a world in motion

IT SYSTEM SUPPORT FOR
ROMANIAN RESEARCH
ASSESSMENT (ISSRRA)

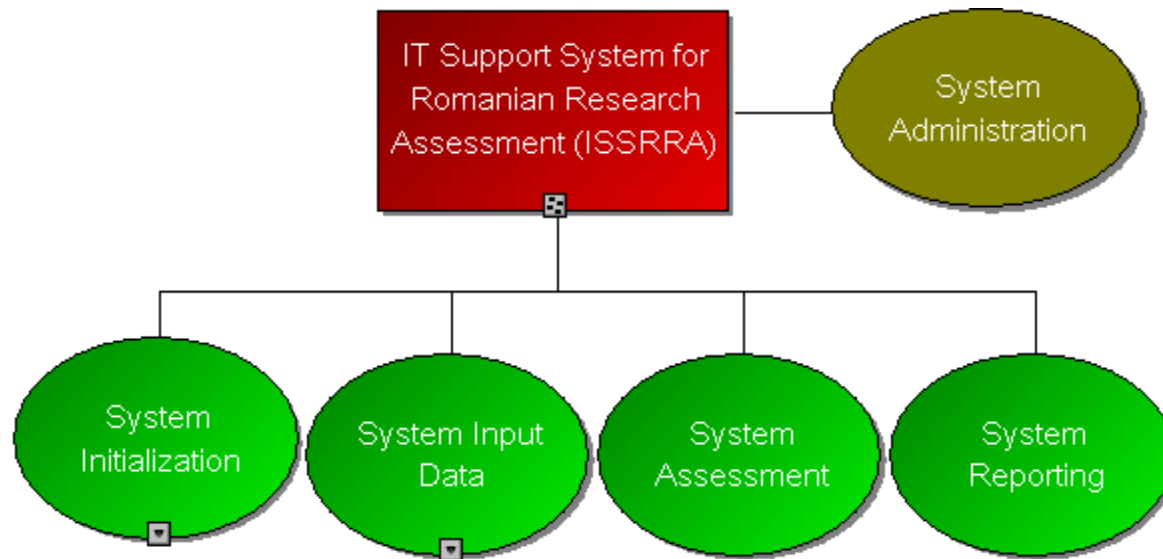


Electronic assessment platform

The main purpose of the IT support system for Romanian research assessment :

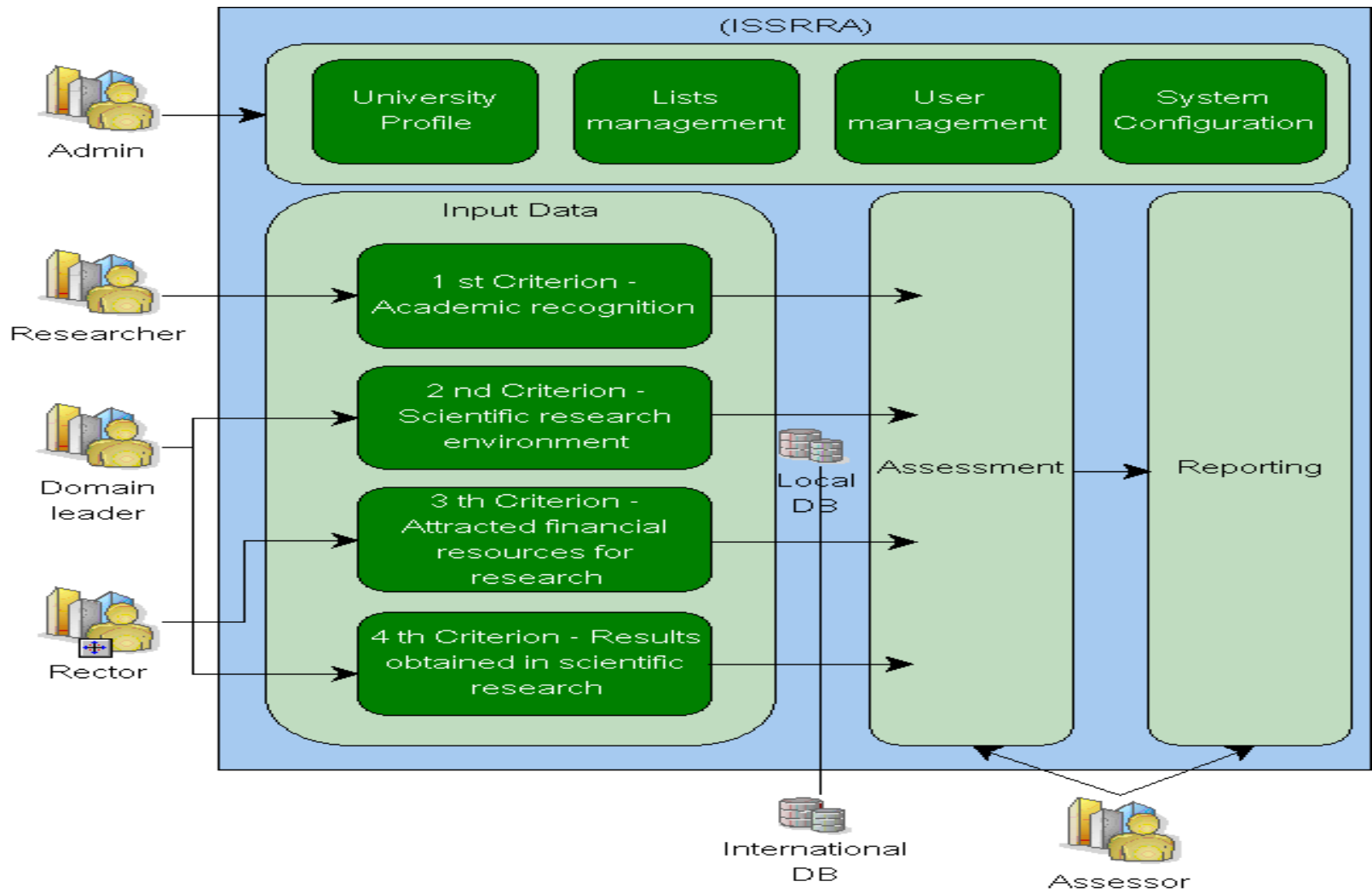
- to save and process data from national research
- to create the researcher's profile with all the research results
- to provide informational support for decisions and policies which have an impact on the research.

■ Business Process Model:



The platform purpose can be achieved by orienting the system to researcher's profile, which is responsible with input data.

IT support system for the Romanian research assessment will be a software collection, evaluation and archiving of scientific research results of the universities from Romania.



Data Input

1st Criterion

Scientific articles

Books and chapters

Patents

Translation

Copyrighted achievements

Socio-economic related products

2nd Criterion

Scientific events

Programs for young researchers

Editing books and translation

Research infrastructure

Access to specialized literature

3th Criterion

Lists and dictionaries

Researchers list

PhD list

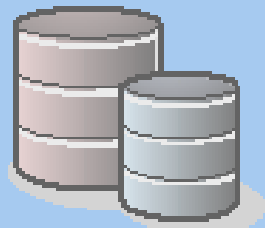
PhD leaders

4th Criterion

National agreements

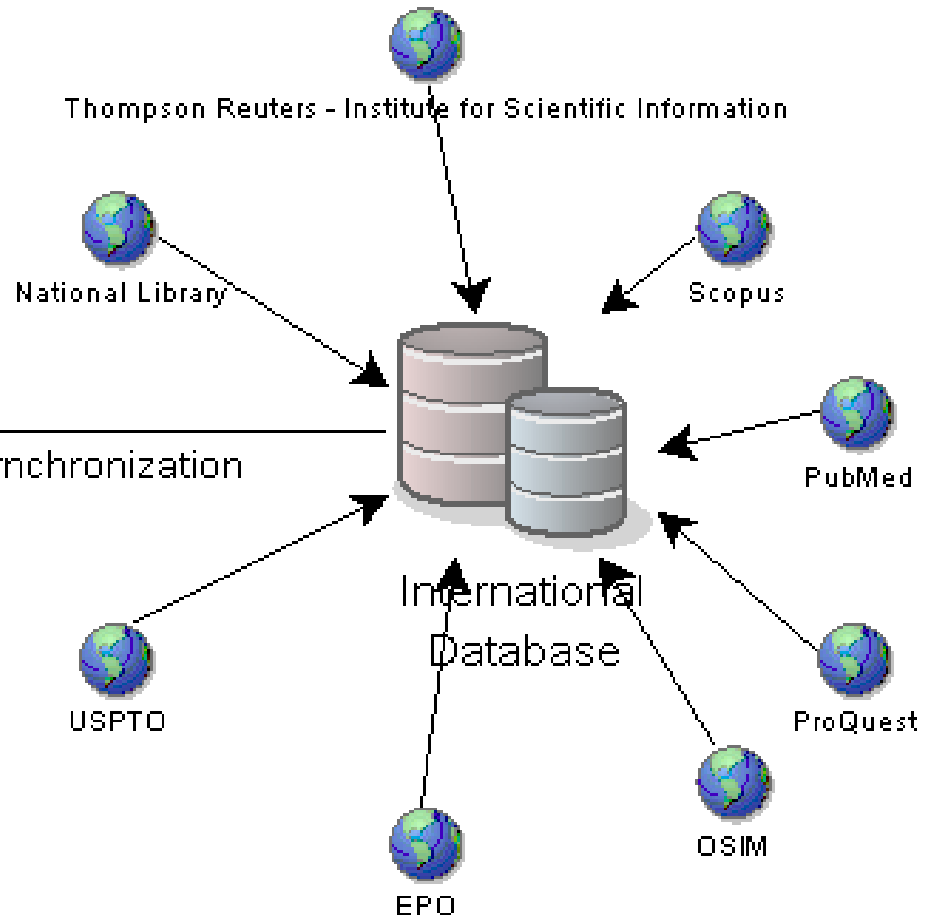
International agreements

IT Support System for Romanian Research Assessment (ISSRRA)



ISSRRA
Database

Scientific Data Synchronization





Acest site este cofinanțat din Fondul Social European prin Programul Operational Sectorial Dezvoltarea Resurselor Umane 2007-2013

Articole

DOI Titlu Autor Publicație

Căutare

Resetare

DOI	Titlu	Listă Autori	Publicație	Ediție			
10.103	Recognition of amino acids by f	Mutihac L, Lee JH, Kim JS, Vicen	Langmuir	2010 May			
10.104	Mining in chemometrics.	Mutihac L, Mutihac R.	Langmuir	2011 May			
10.105	Functionalized calix[n]arenes as	Mutihac L.	Langmuir	2012 May			

Adaugă Articol

Articol

DOI	<input type="text" value="10.103"/>	Ediție	<input type="text" value="2010 May"/>
Titlu	<input type="text" value="Recognition of amino acids by functionalized calixaren"/>	Număr pagină start/final	<input type="text"/>
Publicație	<input type="text" value="Langmuir"/>	Număr citări (ISI)	<input type="text"/>
Cuvinte Cheie	<input type="text"/>	Limba	<input type="text"/>
Abstract	<input type="text"/>	URL	<input type="text"/>
Alte Informații	<input type="text"/>	Document Sursă	<input type="text"/> <input type="button" value="Vizualizare"/>
Nume conferință	<input type="text"/>	Special issue al unui jurnal	<input type="text" value=""/> ▼
Descriere conferință	<input type="text"/>	Conținut Articol	<input type="text"/>
		Volum	<input type="text"/>
		Număr de Volume	<input type="text"/>
		Număr Exemplare	<input type="text"/>

Listă autori

Nume Autor	Prenume Autor	Afiliația	
Mutihac	L		
Lee	JH		
Kim	JS		
Vicens	J		

Assessment initialization

Add assessors
(manually or
import)

Set assessors
for each area

Set assessment
coordinators

Create accounts
for the assessors

Assessment configuration

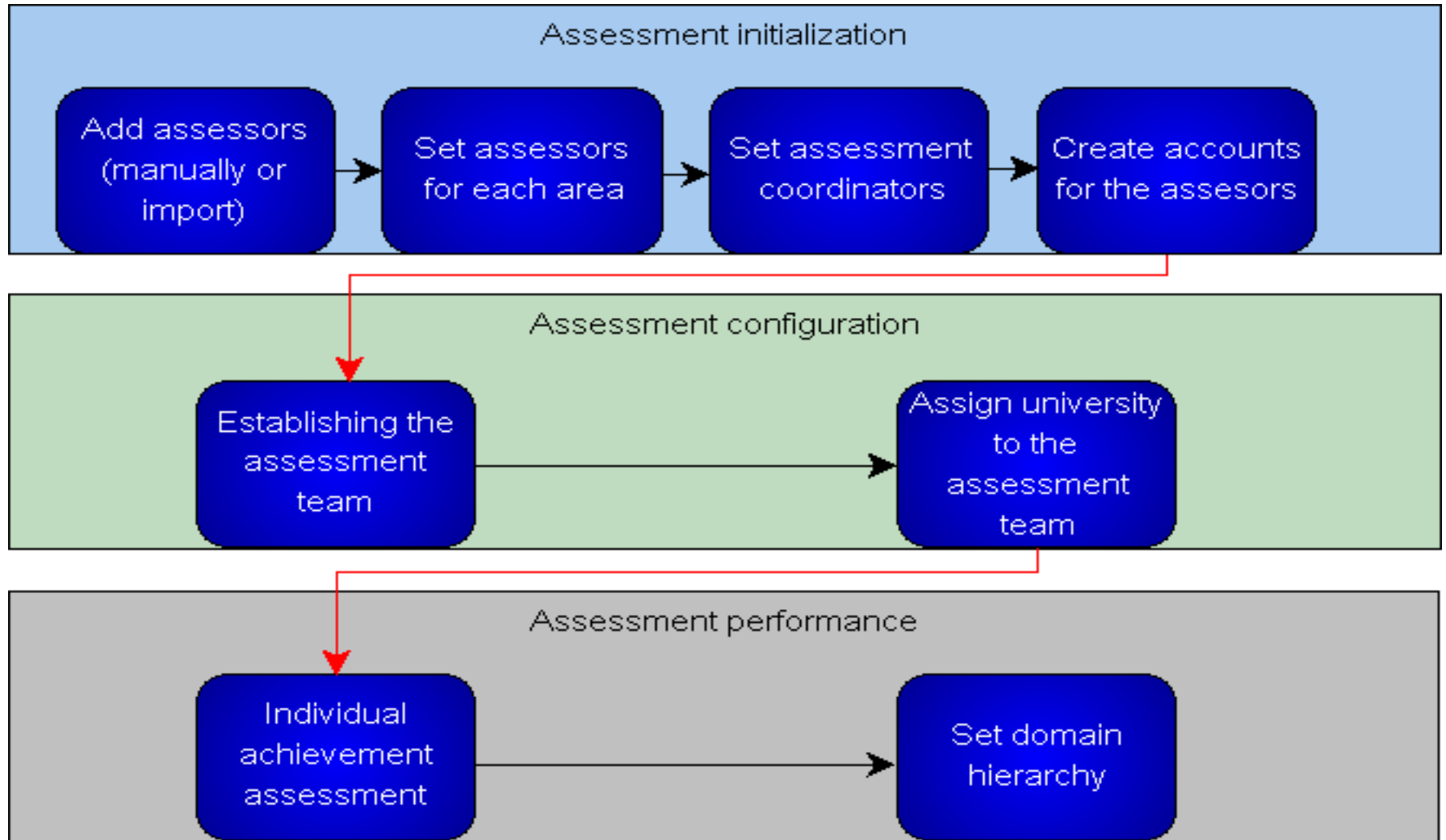
Establishing the
assessment
team

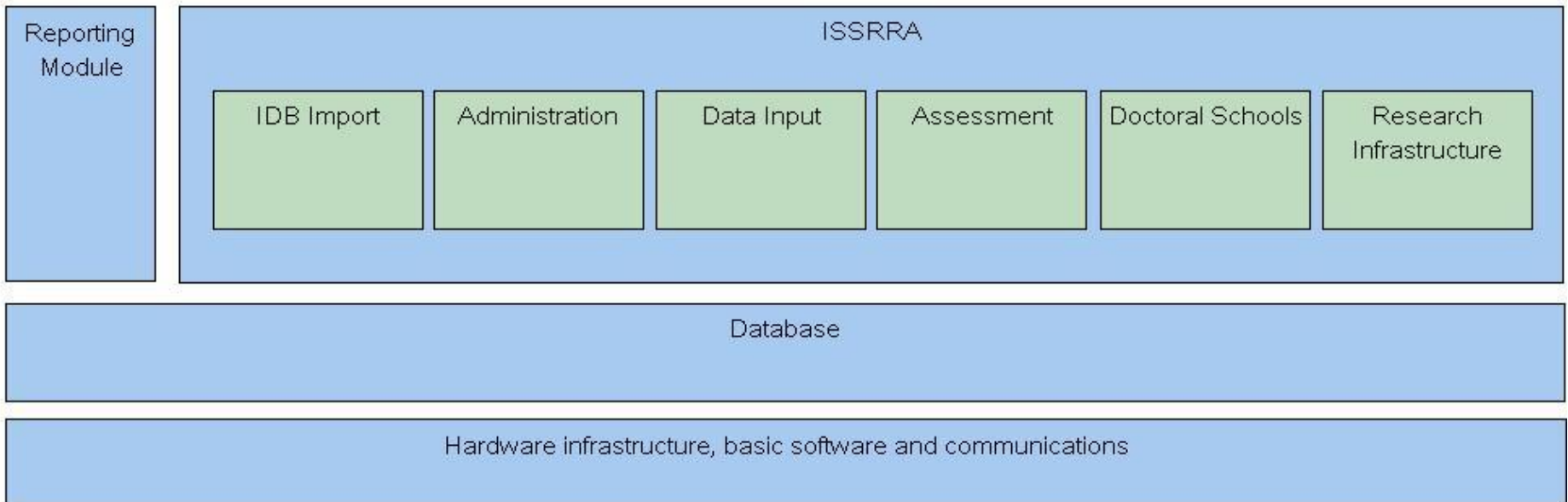
Assign university
to the
assessment
team

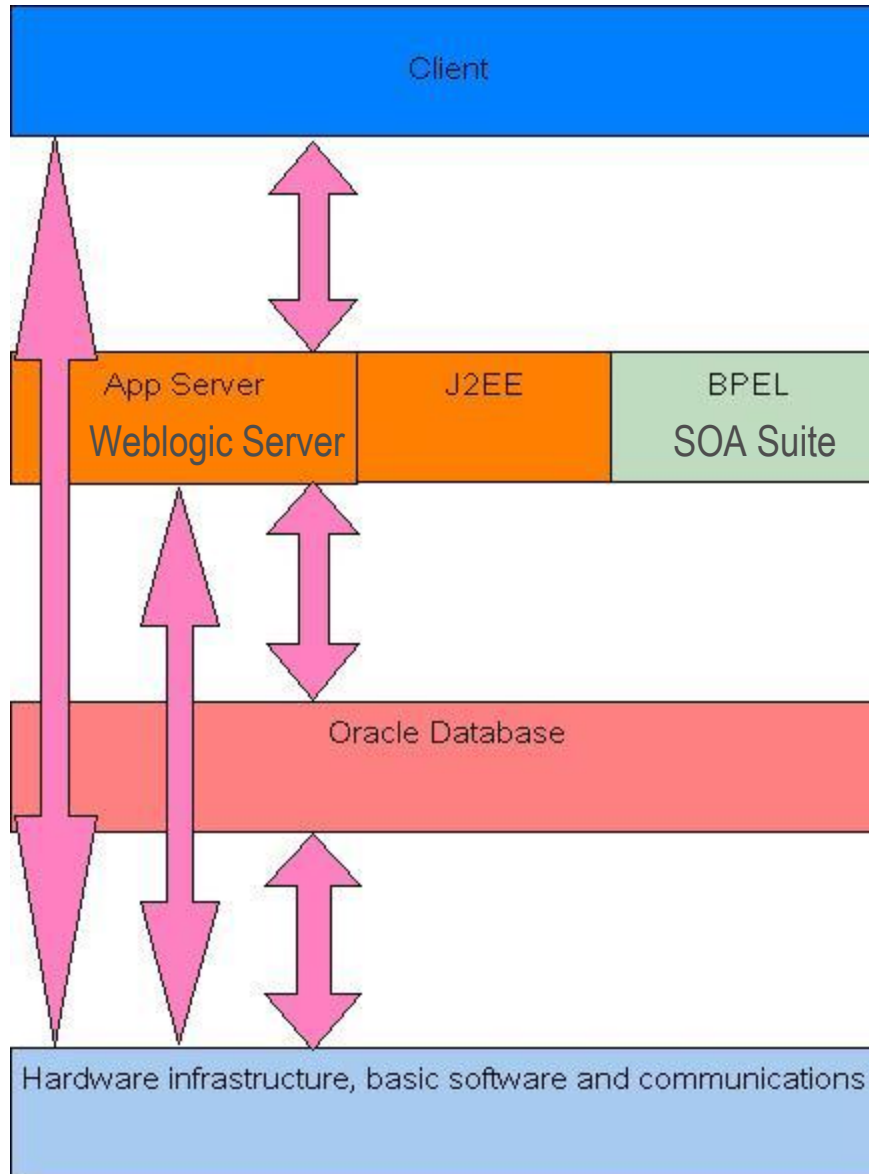
Assessment performance

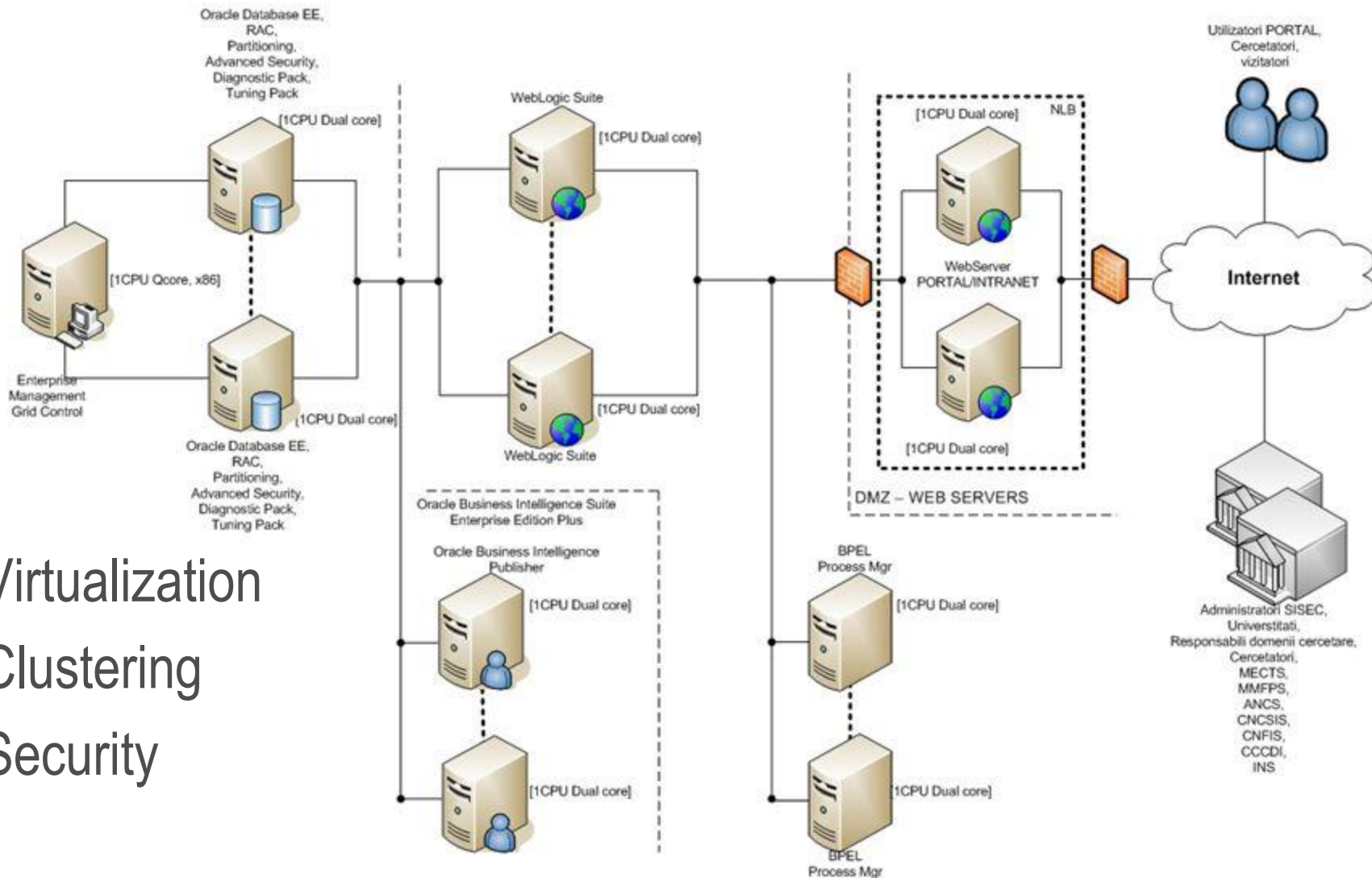
Individual
achievement
assessment

Set domain
hierarchy









- Virtualization
- Clustering
- Security

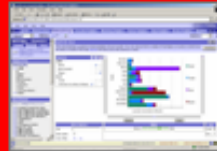
Interactive
Dashboards



Reporting &
Publishing



Ad-hoc
Analysis



Proactive
Detection
and Alerts



Disconnected
Analytics



MS Office
Plug-in



Simplified Business Model and Abstraction Layer

**Oracle
BI Server**

Intelligent Caching Services

Multidimensional Calculation and Integration Engine

Intelligent Request Generation and Optimized Data Access Services



OLTP & ODS
Systems



Data Warehouse
Data Mart



SAP, Oracle
PeopleSoft, Siebel,
Custom Apps



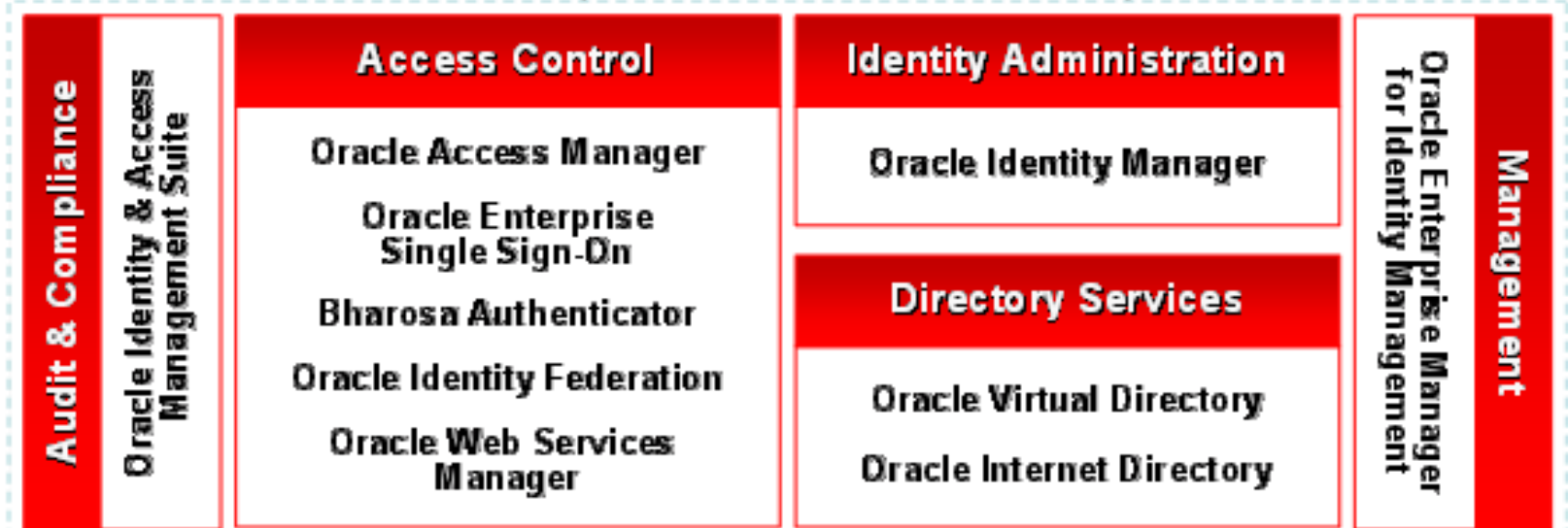
Files
Excel
XML

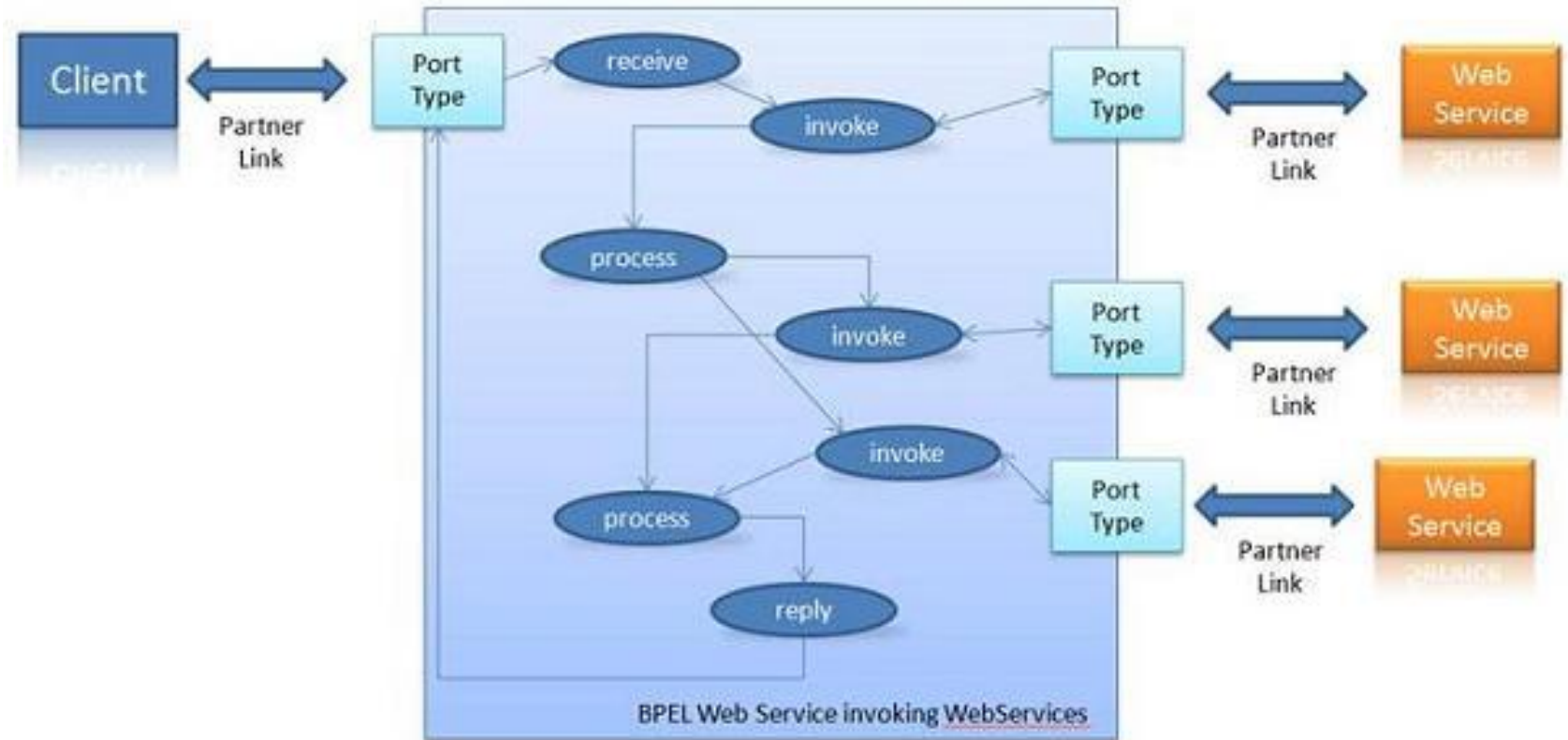


Business
Process

External Apps Internal Apps

Oracle Identity Management Suite





Thank you!
TotalSoft SA Team

www.totalsoft.ro

www.charisma.ro

